



**MICROBOARDS<sup>®</sup>**  
*Technology*



# PF-3 Print Factory

*For Microsoft Windows<sup>®</sup> 7, Vista, and XP*

## Users Manual



# TABLE OF CONTENTS

<b>INTRODUCTION .....</b>	<b>5</b>
WHAT'S INCLUDED .....	5
SYSTEM REQUIREMENTS .....	6
<b>ASSEMBLY AND INSTALLATION .....</b>	<b>6</b>
ASSEMBLY INSTRUCTIONS .....	6
<i>PF-3 Print Factory Assembly</i> .....	6
FRONT PANEL INDICATORS AND BUTTONS .....	7
LOADING DISCS .....	7
INSTALLING INK CARTRIDGES .....	8
<i>Supported Ink Cartridges</i> .....	8
<i>Loading / Replacing Ink Cartridges</i> .....	8
<i>Replacing Empty Ink Cartridges</i> .....	9
PF-3 PRINT FACTORY INSTALLATION .....	10
CONNECTING TO A PC .....	10
WINDOWS 7 AND VISTA HARDWARE INSTALLATION .....	11
WINDOWS XP HARDWARE INSTALLATION .....	11
<b>PRINTING PREFERENCES .....</b>	<b>12</b>
COLOR TAB .....	12
<i>More Color Options</i> .....	12
ADVANCED TAB .....	13
DIAMETER SETTINGS TAB .....	13
INK TAB .....	14
ALIGNMENT TAB .....	14
PRINT QUALITY TAB .....	15
<i>Printing Recommendations</i> .....	15
ABOUT TAB .....	15
<b>THE MICROBOARDS PRINTER TOOLBOX .....</b>	<b>16</b>
CLEANING .....	16
PEN CALIBRATION .....	16
AUTOMATIC MARGIN CALIBRATION .....	17
PRINT TEST DISC .....	17
EXERCISE BELT .....	17
<b>USING SURETHING DISC LABELER .....</b>	<b>17</b>
<i>Creating New Labels</i> .....	17
<i>Printing Labels</i> .....	17
<b>SOFTWARE RE-INSTALLATION .....</b>	<b>18</b>
TOOLBOX RE-INSTALLATION .....	18
SURETHING LABELER SOFTWARE RE-INSTALLATION .....	19
<b>TROUBLESHOOTING .....</b>	<b>20</b>
PRINTER NOT PRINTING .....	20
OUT OF MEDIA INDICATOR ON FRONT PRINTER PANEL .....	20
GAPS OR OVERLAP IN INK COVERAGE .....	20
PRINTING OFF THE PRINTABLE SURFACE .....	20
"NO PRINTERS CONNECTED" MESSAGE .....	20
LOW INK WARNING .....	20
OUT OF INK MESSAGE .....	21
<b>PRINTING SPECIFICATIONS .....</b>	<b>22</b>
<b>TECHNICAL SUPPORT .....</b>	<b>23</b>



Any unauthorized modification to this equipment may result in the revocation by the FCC of the user's authority to operate this equipment.

NOTE: This equipment has been tested and found to comply with the limits for a Class B digital device, pursuant to Part 15 of the FCC Rules. These limits are designed to provide reasonable protection against harmful interference in a residential installation. This equipment generates, uses, and can radiate radio frequency energy and, if not installed and used in accordance with the instructions, may cause harmful interference to radio communications. However, there is no guarantee that interference will not occur in a particular installation. If this equipment does cause harmful interference to radio or television reception, which can be determined by turning the equipment off and on, the user is encouraged to try to correct the interference by one or more of the following measures:

- Reorient or relocate the receiving antenna
- Increase the separation between the equipment and antenna
- Connect the equipment into an outlet on a circuit different than that to which the receiver is connected
- Consult the dealer or an experienced radio/TV technician for help



This product is in conformity with the EMC Directive (89/336/EEC) through compliance with the following European standards: EN 55022, EN 55024. The CE mark has been affixed in accordance with the CE Marking Directive 93/68/EEC.

#### **Canadian Department of Communications (DOC) Statement**

This Class B digital apparatus complies with the Canadian ICES-003 Issue 4:2004. Cet appareil numérique de la classe B est conforme à la norme NMB-003 du Canada.

# Introduction

The PF-3 Print Factory is a robust automated inkjet CD and DVD printing solution. The PF-3 Print Factory has a 100-disc capacity, making the task of printing large numbers of discs fast, easy and hands-free.

## ***Fully Integrated Automation***

Microboards combined our patented auto-loading system with HP's proven inkjet printer technology to give users the highest output possible, both in image resolution and print speed. Since the PF-3 Print Factory is an autoloading printer, no calibration of robotics or manual feeding of discs is required. The PF-3 Print Factory connects by a single USB 2.0 interface to your computer.

## ***Flexibility and Speed for Any Application***

While the PF-3 Print Factory was designed to fill a need in the high-volume arena, it also has the ability to print at 4800 x 1200 dpi on both DVD and CD media. With the included design software, users can enjoy its benefits whether making a few discs or a few hundred.

---

## What's Included

When unpacking your PF-3 Print Factory system, the following items should be included:

- PF-3 Print Factory print system
- PF-3 Print Factory Quick Start Guide
- Users Manual (This document)
- Power Cord
- USB 2.0 Printer Cable
- Blank Printable CD's
- 3 Input Bin rods
- 100 disc output assembly
- Microboards PF-3 Print Factory Install CD (Includes Windows 2000/XP drivers, Printer Toolbox, and SureThing Label software)
- 1 V102C Tri-color ink cartridge
- 1 V101B Black ink cartridge
- Print Sample

If any of these items are missing, please contact your distributor or Microboards Technology Technical Support department at 952-556-1639.

**The PF-3 Print Factory installation disc includes an Installer that will walk you through the process step by step. Please perform the installation in order as specified in the Installer before connecting to a computer.**

---

# System Requirements

The Microboards PF-3 Print Factory has the following minimum requirements and compatibilities:

## **Supported Operating Systems**

Microsoft Windows 7, Windows Vista, or Windows XP with SP2. 32- and 64-bit Operating Systems.

## **Processor**

Pentium 4 (or equivalent) CPU, running at 2.0 GHz or faster.

## **System Memory**

A minimum of 1 GB is required.

## **Hard Drive Space**

Approximately 115 MB of free space is required for the applications and drivers.

## **USB Connection**

USB 2.0 is required.

# Assembly and Installation

---

## Assembly Instructions

### **PF-3 Print Factory Assembly**

Remove the PF-3 Print Factory system from the shipping box and confirm you received all of the items.

Place the PF-3 Print Factory on a stable, flat surface. You will need room both in front and behind the system, as discs will be accessed from both locations.

Install the 2 long input bin posts into the input hopper by screwing them down onto the screw mounts on the left side of the input hopper. Install the wide post on the right side of the input hopper.



Install the output bin:

- Align the two holes in the output bin with the holes on the front of the printer (numbers 1 and 2).
- Secure the output bin with the two thumb screws.
- The output bin should now be securely in place.
- Next, slide in the 100 disc output spindle into place.

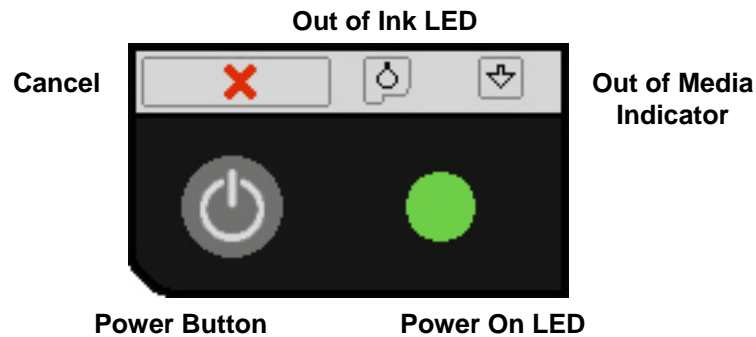
The output bin is designed to hang over the front edge of your work surface.

Plug in the PF-3 Print Factory with the AC power cord provided.

Turn on the PF-3 using the switch on the back of the unit.



## Front Panel Indicators and Buttons



- Power Button – The Power button turns the PF-3 Print Factory on and off. It may take a few seconds for the PF-3 Print Factory to turn on after you press the Power button

**NOTE: The AC power switch located on the back of the PF-3 Print Factory must be turned on first in order to supply power to the Front Panel.**

- Power On LED – This LED will show green when the power to the printer is on.
- Cancel Button – Pressing the Cancel button cancels the current print job.
- Out of Media Indicator Button – Pressing this button will clear any media feed issues. This button has an LED that will flash amber when a media feed issue is occurring.
- Out of Ink LED – This LED will be on if the cartridges are missing or if there is an issue with either of the cartridges.

## Loading Discs

The PF-3 Print Factory will accept CD or DVD 120 mm (12 cm) inkjet printable discs. If the disc does not have an inkjet printable surface, the ink will not adhere to the surface of the disc. The PF-3 Print Factory will only accept 12 cm discs. **Business card or 8 cm discs are not supported by this system.**



Figure 1

Load the first 5 or 6 discs flat, as seen in figure 1.



Figure 2

Load the rest of the discs at an angle, against the wide input rod, as seen in figure 2.

The PF-3 Print Factory will hold a maximum of 100 discs. **DO NOT** load more than 100 discs in the system, as this may cause the discs to load incorrectly.

---

# Installing Ink Cartridges

## Supported Ink Cartridges

The PF-3 Print Factory uses 1 tri-color ink cartridge and 1 black ink cartridge. The part numbers for these cartridges are V102C (color) and V101B (black). If other cartridges are installed, the PF-3 Print Factory will not function. These cartridges are available from any Microboards reseller.

***Refill kits or non-Microboards ink cartridges are not recommended for use in the PF-3 Print Factory system. Use of non-Microboards cartridges will cause the printer to fail. Use of refilled cartridges may cause the PF-3 Print Factory to fail and may affect your warranty.***

## Loading / Replacing Ink Cartridges

Cartridges can be changed while the PF-3 Print Factory is on. The Out of Ink LED will light if any cartridge is beginning to run low on ink.

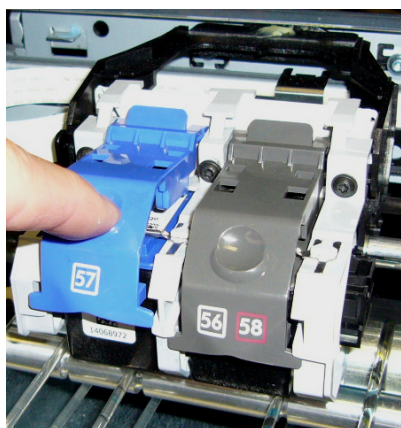
- With the printer on, open the front cover and wait for the print carriage to move to the center of the printer.
- Lift the cartridge latch by lifting the center of the front of the latch.
- If replacing an empty ink cartridge, remove the cartridge that needs changing by sliding the cartridge towards the front of the Printer.
- Remove each new print cartridge to be installed from its packaging.
- Remove the protective covering from the printheads before installing the cartridges.
- Slide the correct ink cartridge into the correct slot – color on the left, black on the right.
- Lower the cartridge latch until it locks into place by applying gentle pressure to the finger depression. **Do not try to force the latch down.**
- Close the front cover.

**Any time you change ink cartridges, you should always wait until the printer has primed the cartridges before sending it a print job. The priming cycle will take 70-80 seconds to complete after the door is closed.**



### **Inserting or Removing a Cartridge**

After lifting the cartridge latch, slide the cartridge back to insert, or forward to remove.



### **Lowering the Cartridge Latch**

The latch on the right in is the correct position. The left latch is being closed.



## Replacing Empty Ink Cartridges

The PF-3 Print Factory will notify you when either cartridge is completely empty. Since the current print job will be cancelled at that point, it is strongly recommended that you replace the cartridges when you are notified that they are low rather than waiting until they are empty.

Since the PF-3 Print Factory is designed for unattended operation, however, this may not always be possible. If you see the Out of Ink message on your PC, please perform these steps:

1. Open the front door of the PF-3 Print Factory.
2. When the carriage moves to center, remove the ink cartridge specified in the message.
3. Replace the cartridge and close the front door.
4. Press the Cancel button on the front printer control panel.
5. Wait for the printer to prime the cartridge. The priming cycle will take approximately 70-80 seconds to complete. Do not perform the next step until the priming cycle completes.
6. After the disc ejects, click the **OK** button on the Out of Ink message.



**Any time you change ink cartridges, you should always wait until the printer has primed the cartridges before sending it a print job. The priming cycle will take 70-80 seconds to complete after the door is closed.**

---

## PF-3 Print Factory Installation

***The PF-3 Print Factory installation disk includes an Installer that will walk you through the process step by step. Please use the Installer and follow the installation steps in order.***

The following installation sections are intended only as a reference for the installation process, not as a guide to installing the PF-3 Print Factory. Performing the installation out of order could result in an unsuccessful installation.

The PF-3 Print Factory Installation Quick Reference Guide will show you the order in which the installation will occur.

***Installation should always be done when logged in as a user with full Administrator rights.***



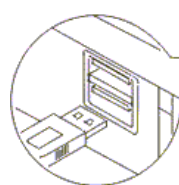
---

## Connecting to a PC

***DO NOT CONNECT YOUR PF-3 PRINT FACTORY TO A COMPUTER BEFORE RUNNING THE INSTALLER LOCATED ON THE INSTALLATION DISK!!***

The connection between the PC and the Microboards PF-3 Print Factory is done with one USB cable.

1. Confirm that the AC power cord to the back of the PF-3 Print Factory is connected and that the switch in the back is ON.
2. Confirm that your PC is powered on.
3. Connect the square shaped end of the USB cable to the back of the PF-3 Print Factory.
4. Connect the flat, rectangular end of the USB cable into a USB 2.0 port in your PC.



## Windows 7 and Vista Hardware Installation

The Microboards PF-3 Installer should always be run when logged in as user with full Administrator rights. This is required for the driver pre-installation to be successful. Once the PF-3 is plugged into the PC via the USB connection, the hardware will automatically be found and installed on your PC.

During the driver pre-installation, you may need to verify that you would like to install the drivers.

If the Installer is run by a user without full Administrator rights, or you do not verify that the drivers should be installed, the hardware will need to be installed using the Hardware Wizard. Please follow the directions below.

## Windows XP Hardware Installation

*The Windows Found New Hardware Wizard will appear during any installation, including when using the Installer. Please follow all directions in the order in which they appear when using the Installer.*

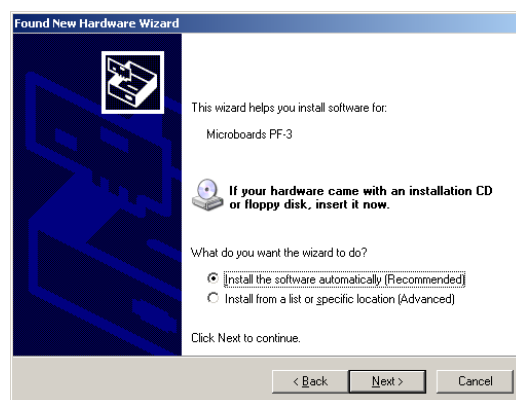
Insert the Microboards PF-3 Print Factory CD into a drive in your computer. Follow the instructions provided by the installer. Connect the PF-3 Print Factory to the PC only when you are prompted to.

The operating system will next display the following windows:



1. Select **No, not this time** and click **Next**.

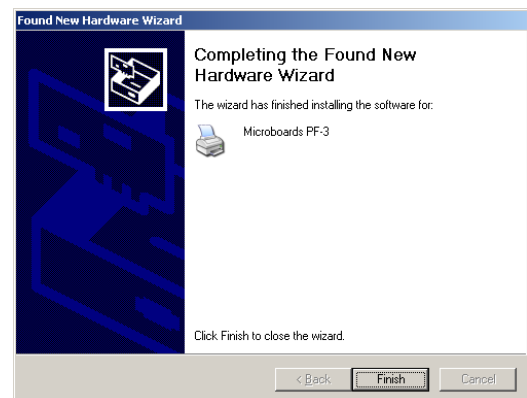
The following screen will appear:



2. Click the **Next** button and the files will be copied from the CD.



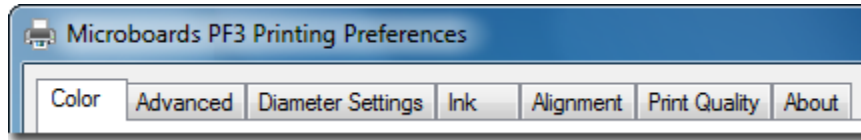
3. If this screen appears, click **Continue Anyway**.



4. Click **Finish**.

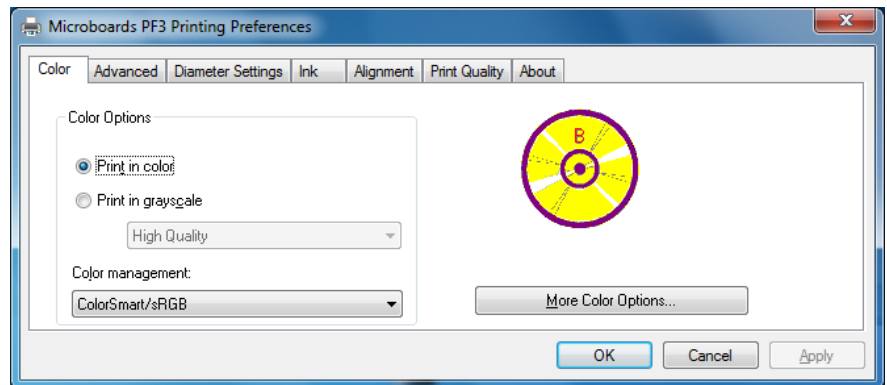
# Printing Preferences

Access the Printing Preferences by clicking the **Start** Button on your Windows computer. Select **Settings** and then select **Printers**. Right click on the Microboards PF3 icon, then select **Printing Preferences**. There are 7 tabs across the top of the window. Click each tab to see the available settings.



## Color Tab

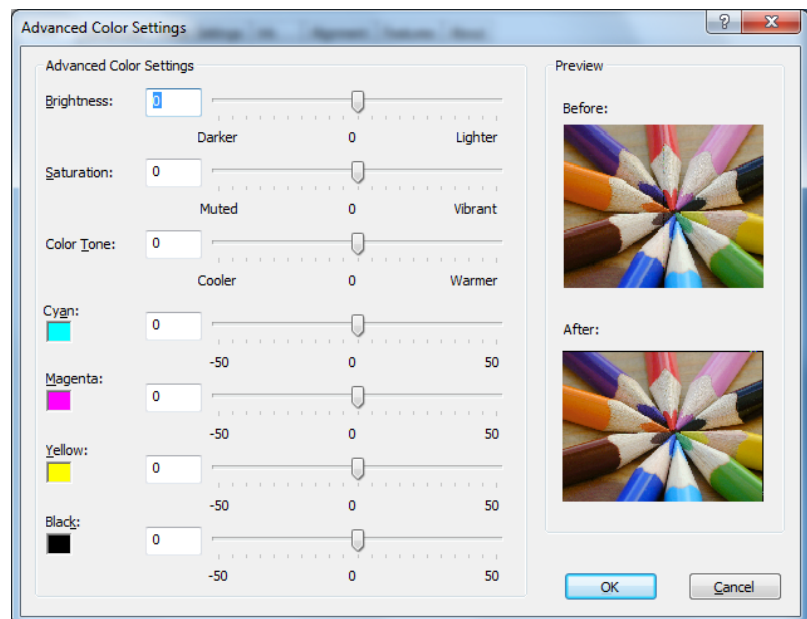
The Color Tab allows you to specify that the entire image should be printed in color or grayscale. You also have access to **More Color Options** from this tab.



## More Color Options

**Saturation, Brightness** and **Color Tone** allow you to fine tune your print image.

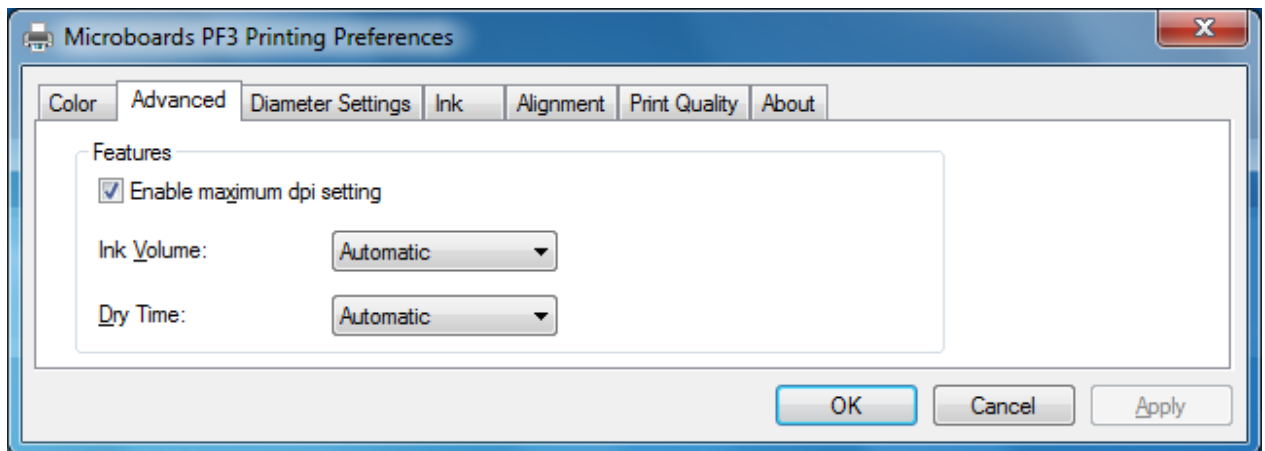
The four ink settings allow you to change the volumes used of each specific ink cartridge.



---

## Advanced Tab

The Advanced Tab allows you to **Enable Maximum dpi setting** and adjust the amount of ink placed on the disc using the **Ink Volume** and **Dry Time** settings.



Enabling the maximum dpi will result in longer times to process your print image, reducing throughput.

To change the Ink Volume or Dry Time settings, click the drop-down box and select Change. A window will open with a setting bar for the option selected.

Changing the Ink Volume will affect how quickly you need to replace your ink cartridges, but also affects the quality of the printed output.

Changing the Dry Time can increase or decrease your throughput, but if the Dry Time is set too low, you risk the possibility that the last disc printed will not have dried before the next disc is placed on top of it in the output bin.

The default settings are the recommended settings and should be used unless absolutely necessary. If you choose to increase the Ink Volume, you should also increase the Dry Time.

---

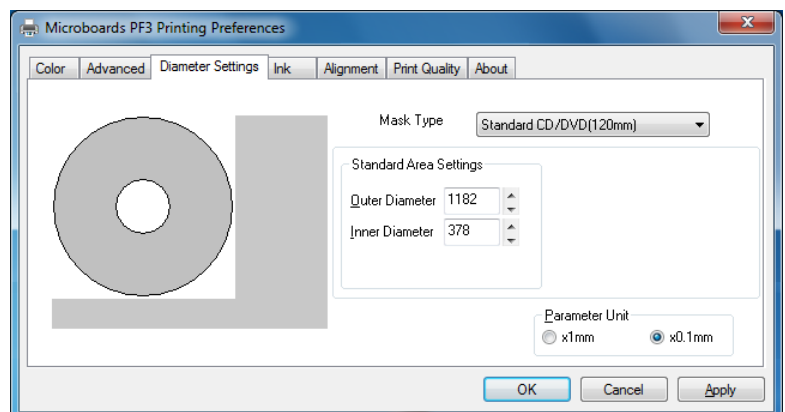
## Diameter Settings Tab

The Diameter Settings tab allows you to change the size of the print image to accommodate the variety of printable surface area available on media.

The Outer and Inner **Diameters** will change the size of the area to be printed. To avoid excessive ink buildup, these values should never be set so that the PF3 Disc Printer is printing off the media.

The Parameter Unit should remain on the **0.1mm** setting for maximum precision.

You can also select one of the preset **Mask Types** to change the diameter settings.



## Ink Tab

The **Ink Levels** show how much remains of the color and black cartridges. The amount shown as remaining in the Color cartridge is the individual color with the lowest level. To see the individual color level, click the **Advanced Ink Levels** button.

NOTE: If you place a used cartridge in the PF-3, the ink level may not be reported correctly. If the PF-3 can identify the cartridge, it may report the correct ink levels; if not, it will assume that the ink cartridge is new and will show ink levels of 100%.

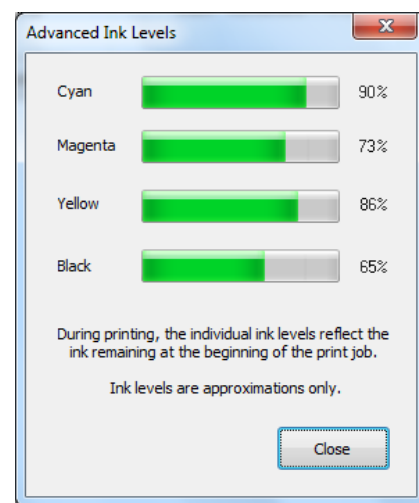
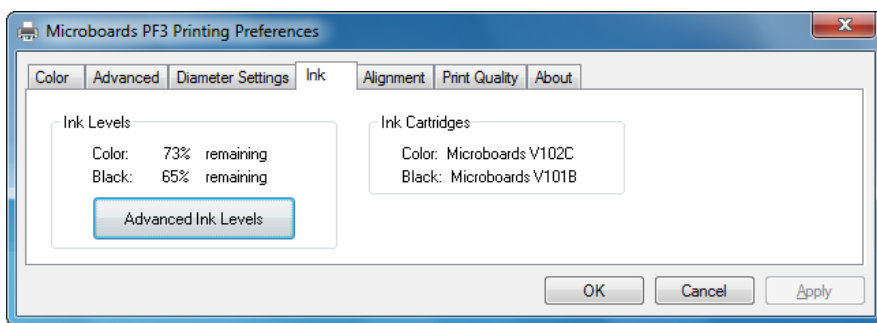
Before each disc is printed, the ink levels are checked. If the level of any one color has reached 10%, a warning message will be displayed on your PC and printing will be temporarily suspended. You can either change the cartridge at this point and click OK, or click OK to continue printing using the same cartridge.

If you continue with the same cartridge, printing will continue uninterrupted until the ink level reaches 5%. The low ink level warning will be displayed once more. Again, either change the cartridge or continue.

Once the ink level reaches 3% or less, the warning will be displayed before each print.

**It is strongly recommended that you replace the cartridge at this point.**

The **Ink Cartridge** information includes the re-order part number for the cartridge.



## Alignment Tab

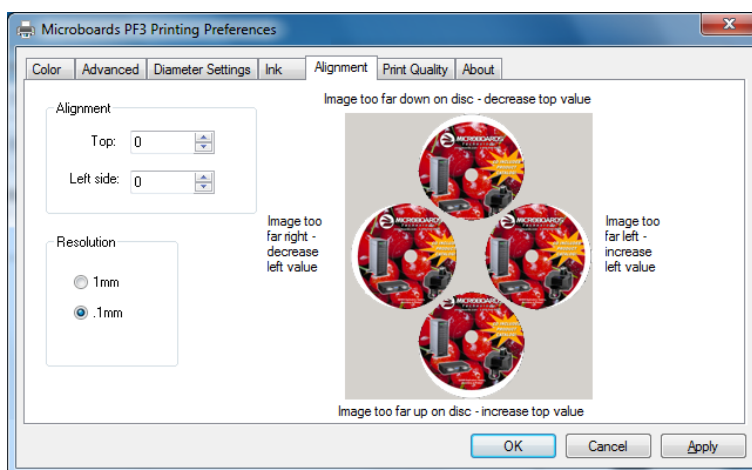
**Alignment** values will move the print image on the disc. Use the graphic on the right side of the tab as a guideline in how alignment values should be adjusted.

The **Resolution** setting should always be set at **.1mm** for best results.

The Outer and Inner **Diameters** will change the size of the area to be printed. To avoid excessive ink buildup, these values should never be set so that the PF3 Disc Printer is printing off the media.

The default diameter settings are **1180** for the Outer and **360** for the Inner when the Resolution is at .1mm. For hub-printable media, the Inner diameter should be reduced.

You may need to adjust the alignment depending on the media you are using.





## Print Quality Tab

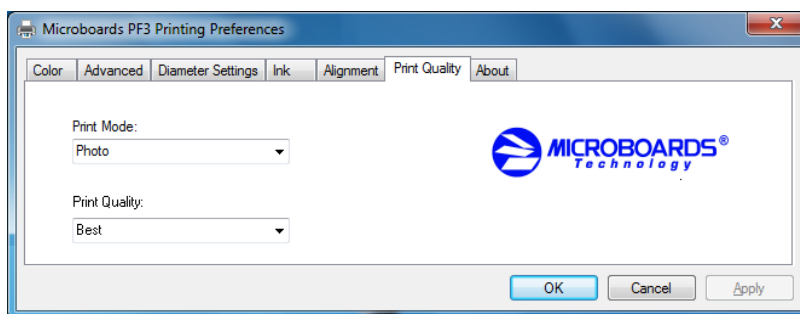
The Print Quality tab controls the print resolution.

### Print Modes

- Text and Graphics
- Photo

### Print Quality

- Normal
- Best
- MaxDPI



## Printing Recommendations

Text and Graphics mode is used for printing mainly text information and small, simple graphics. Below are some examples for images in Fast, Normal and Best Modes:



*Text and Graphics – Fast*



*Text and Graphics – Normal*



*Text and Graphics – Best*

Photo Mode should be used when printing on the entire disc or when using detailed graphics. Here is an example:

*Photo – Normal, Best, and MaxDPI Modes*



## About Tab

The About tab provides you with contact information for the worldwide Microboards offices.

# The Microboards Printer Toolbox

To access the Microboards Toolbox, double-click the toolbox icon located in the tool tray.



Select the Microboards PF3 and click the buttons to access a particular maintenance function of the Toolbox for the selected printer.

The Toolbox should be left running at all times in order to provide you with low ink warnings. Warnings will still be provided with the toolbox minimized.



## Cleaning

The printheads may require cleaning if the printed images show streaks of color. This may occur if the Print Factory has been idle for an extended period of time.

There are 3 levels of cleaning available: **Wipe and Spit**, **Clean**, and **Super Clean**.

**Wipe and Spit** is a low-level cleaning, using the least ink and taking the least amount of time to complete. **Clean** uses more ink and takes more time. **Super Clean** uses the most ink and takes the longest time to complete.

After each of the cleanings, a disc will be printed to verify the cleaning results.

Running this process more than once may be required if the quality does not improve after cleaning one time.

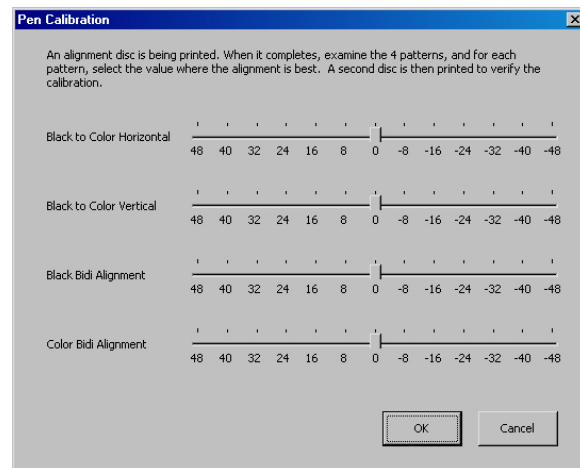
## Pen Calibration

The print pens may occasionally need calibration. You will need to have blank discs loaded in the input hopper for this process.

Press the **Pen Calibration** button. A disc will print with 4 sets of numbered lines – Black to Color Horizontal, Black to Color Vertical, Black bidi Alignment, and Color bidi Alignment. Position the 4 slide bars in the window shown to the right based on the line number that has the best alignment in each of the 4 printed sets.

Click **OK** when complete. The patterns will be printed again using the entered pen alignment values.

This procedure should not be a regular necessity.





## Automatic Margin Calibration

If the alignment of the discs is severely out of position, use this button to have the printer find the location of the media.

Place an unprinted disc in the input hopper. Use the same media normally used during printing to ensure a better calibration.

Press the **Automatic Margin Calibration** button. The disc will load and the print carriage will first find the top and bottom of the disc. Next, the disc will move backwards half the diameter of the media and the left and right sides will be located. The side location will be performed 3 times before the disc is ejected out the front.

**NOTE:** *The Margin Calibration is not intended to eliminate the Alignment values on the Printing Preferences Alignment tab. You may need to fine-tune the image position by using the Alignment values after the margin calibration is complete.*

## Print Test Disc

Load an unprinted disc in the input hopper prior to clicking this button to print a Test Disc image.

## Exercise Belt

This utility should be run if the printer has been idle for an extended period of time, and can be run multiple times if necessary. The belts will run at high speed for a period of time to recondition the belts. It is not necessary to load any media for this utility.

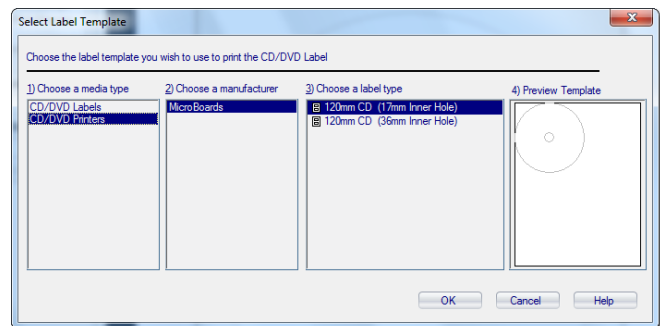
# Using SureThing Disc Labeler

SureThing Disc Labeler is included with the PF-3 Print Factory and will be installed during the PF-3 Installation. For more information on using SureThing, please refer to the SureThing Help menu.

## Creating New Labels

Any label you create in SureThing must use the Microboards template to print correctly.

1. To create a new label, either click **New Project** in the Action window on the left, or select **New** from the **File** menu.
2. Click the **Select Label** button on the lower left corner of the dialog to view the available label templates if the dialog does not appear as shown to the right.
3. Highlight **CD/DVD Printers** in the Media Type column.
4. Highlight **Microboards** in the center Manufacturer column.
5. Select from the options listed in the Label Type column.



**We recommend that you use the 17mm inner hole template to ensure that your image will fully cover the printable surface on both hub printable and non-hub printable media, adjusting the Diameter Settings when changing between media types (see page 14).**

6. Click **OK** to begin designing the label.

## Printing Labels

Select **Print** from the File menu while the label you want to print is open. Be sure that you have selected the Microboards PF3 and that **CD/DVD Printer** is selected in the Print Using field before clicking the **Print** button.

If you are printing more than one copy of a label, enter in the number you wish to print before clicking the **Print** button.



# Software Re-Installation

The information in this section will only apply to a manual re-installation of the individual software packages. If you have not yet installed the PF-3 Print Factory using the Installer, it is recommended that you do so. Installing the PF-3 Print Factory in an incorrect order could result in an unsuccessful installation.

---

## Toolbox Re-Installation

The Microboards Toolbox will be installed automatically during the initial installation of the PF-3 Print Factory from the Installation CD. The Toolbox installation is hidden at that time, but the successful installation of the Toolbox can be verified by the presence of the Toolbox icon on your Windows desktop.

There are 2 methods of reinstalling the Toolbox should the need arise:

- A. **(Recommended)** Load the Installation CD and select the **Repair** option when the installer starts.



Click the **Microboards PF-3 Toolbox** button to reinstall the Toolbox or the **Install Both Applications** button to reinstall both SureThing Disc Labeler and the Toolbox.

- B. Open the **Applications** directory on the Installation CD and copy the file **Toolbox.exe** to the C:\Program Files\Microboards\PF3 Print Factory\Toolbox directory on your PC (if your PC does not boot off the C: drive, use the correct drive letter instead). The application is stand-alone and can be placed anywhere on the PC, but it will not automatically launch when Windows is started unless it is in this directory.

# SureThing Labeler Software Re-Installation

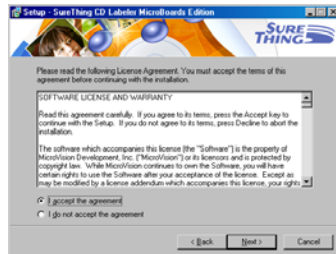
There are 3 methods of reinstalling SureThing should the need arise:

- A. **(Recommended)** Insert the Microboards PF-3 Print Factory Installation CD into the CD/DVD ROM drive on your computer and select the **Repair** option when the installer starts. Click the **SureThing Disc Labeler** button to reinstall SureThing. Clicking the **Install Both Applications** button will reinstall both SureThing and the Toolbox.

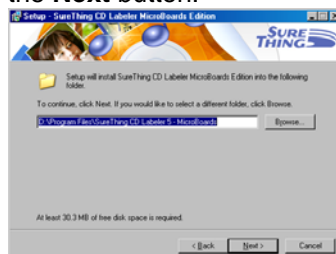
Follow these steps once the SureThing installer launches:



1. Click **Next** to continue.



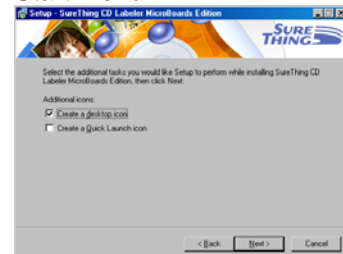
2. Once the User License screen appears, select **I Accept** and click the **Next** button.



3. If you wish to change the default Install directory, it can be done here. Click **Next** when completed.



4. Click **Next** to add a shortcut in the Start Menu.



5. Choose to add an icon to your desktop and/or a folder in the Start Menu. Once selected, click **Next**.

6. Click **Install** to begin copying the files.



7. Remove the check to launch SureThing at this time, then click **Finish**.

- B. Alternately, you can open the **Applications** directory on the Installation CD and run **SureThing.exe** to install SureThing manually. Follow the on-screen instructions as shown in steps 1-6 above.

- C. The SureThing installer was also added to your hard drive in the event that you need to reinstall but do not have access to the Installation CD. Run **SureThing.exe** in the **C:\Program Files\Microboards\PF3 Print Factory\Applications** directory on your hard drive. Follow the on-screen instructions as shown in steps 1-7 above.

# Troubleshooting

---

## Printer not printing

1. Confirm the PF-3 Print Factory is plugged into a power source and is turned on. The ON/OFF switch is located at the back of the unit, above the power cable connector.
2. Confirm that the Power On LED on the front control panel is on. If not, press the Power button on the panel.
3. Confirm the PF-3 Print Factory is connected to the computer with a USB cable. This can be checked by clicking on Start, going to Settings and selecting Printers. Confirm the printer is listed and is active. If the icon is not active, make sure the PF-3 is not in Pause mode, or the PF-3 is set in Use Printer Offline. Also check to make sure the correct printer port is selected.

## Out of Media Indicator on Front Printer Panel

This will occur if the input hopper is empty or is loaded incorrectly. If the input hopper is empty, load more discs and press the Out of Media indicator.

If media is in the input hopper, unload all discs. Reload the media according to the instructions on page 7 and press the Out of Media indicator.



## Gaps or Overlap in Ink Coverage

1. If the right half inch of the disc is not printing, the image was last saved using an old SureThing template and needs to be refreshed. Open the image in SureThing, change the template from the Microboards template that first appears to the other Microboards template, then back to the original. Save your image file to complete the process.
2. If there are gaps or overlaps when printing, you may be printing Text & Graphics mode. Change Mode to Photo. See page 12 for details.
3. The print pens may need to be recalibrated. Please refer to page 13 for details.

## Printing off the Printable Surface

The printer is not aligned correctly. See page 14 for details.

## “No Printers Connected” Message

The Microboards Printer Toolbox did not detect a connected printer. Verify that the PF-3 Print Factory is connected and powered on. You may need to reboot your PC.

## Low Ink Warning

You will be provided with a warning when either of the ink cartridges is running low. Check the Ink tab in the Printer Preferences to determine which cartridge is running low. When the estimated ink level reaches 0%, a message warning you that the ink cartridge is empty will appear.

**It is strongly recommended that you replace the cartridge when the warning indicates the ink level is at 0%. Continuing to run the PF-3 Print Factory with an empty cartridge may damage the printer.**

If you notice poor ink quality or a missing color in your prints at any time, replace the ink cartridge. See pages 8-9 for details.

## Out of Ink Message

If you do not change the cartridge when the Low Ink warnings first appear, you will run the risk of draining the cartridge completely, affecting print quality and potentially damaging the printer. The Out of Ink message will appear when the ink levels of specified the cartridge can no longer be safely used.

**It is strongly recommended that you do not wait for the ink to be completely drained. You should change the cartridges when or shortly after the Low Ink warning appears.**

When the Out of Ink message appears, the current print job will be cancelled. At that point, please follow the steps below, in the order in which they are listed:

1. Open the front door of the PF-3 Print Factory.
2. When the carriage moves to center, remove the ink cartridge specified in the message.
3. Replace the cartridge and close the front door.
4. Press the Cancel button on the front printer control panel.
5. Wait for the printer to prime the cartridge. The priming cycle will take approximately 70-80 seconds to complete. Do not perform the next step until the priming cycle completes.
6. After the disc ejects, click the **OK** button on the Out of Ink message.



If you do not wait for the cartridge priming cycle to complete and you have additional print jobs waiting in the print queue, you may have to clear the print queue before the printer will respond. During the PF-3 installation, a shortcut to a utility to clear the print queue was added to your PC. Please note that this utility will clear all print jobs currently in the print queue for any printer.

To run the utility, click the Start button and select either Programs or All Programs, depending on the Operating System and the Start Button behavior. Click the Microboards entry, then PF-3 Print Factory. Click the **Print Queue Utility** shortcut in the Toolbox directory. After the utility opens, click the **Clear Print Queue** button to remove all pending print jobs on your PC. The queue will clear in approximately 10 seconds; when it is complete, you can begin printing again.



# Printing Specifications

**Print Speed:**

Depends upon percentage of coverage and print mode selected

**Photo:**

- Approx. 115 seconds for 100% full-color coverage, Photo Best Mode
- Approx. 80 seconds for 100% full-color coverage, Photo Normal Mode

**Text & Graphics:**

- Approx. 65 seconds for 100% full-color coverage, Text & Graphics Best Mode
- Approx. 25 seconds for 100% full-color coverage, Text & Graphics Normal Mode
- Approx. 30 seconds for 20% coverage Text & Graphics Best Mode
- Approx. 20 seconds for 20% coverage Text & Graphics Normal Mode

**Print Technology:**

HP Inkjet

Print Quality, Black: up to 1200 dpi

Print Quality, Color: up to 4800 x 1200  
optimized dpi

**Warranty:**

One Year Limited Warranty

**Ink Cartridge Types:**

Microboards V102C (Color) and V101B  
(Black)

**Label Editing Software:**

SureThing™ CD/DVD Labeler  
Microboards Edition for Windows included

**Media Types:**

Printable-surface 120mm CD-R or DVD-R

**Maximum Print Width:**

4.72" (120mm)

**Connectivity:**

USB 2.0 required

**Power Supply:**

Auto Detect AC Power:

90VAC – 240VAC, 47Hz – 63Hz

**Memory:**

8 MB

# Technical Support

For technical questions or support issues, contact Microboards Technology technical support:

**United States**

PH: 952-556-1639

FAX: 952-556-1628

[support@microboards.com](mailto:support@microboards.com)[www.microboards.com](http://www.microboards.com)**Europe**

PH: +44 (0) 845 230 7800

[www.microboards.co.uk](http://www.microboards.co.uk)**Japan**

PH: 03-3561-2266

[www.microboards.co.jp](http://www.microboards.co.jp)

Please have the Model and Serial Number of your PF-3 Print Factory available when contacting Technical Support.

Date of Purchase: \_\_\_\_\_

Place Purchased: \_\_\_\_\_

Serial Number: \_\_\_\_\_

**Replacement Ink Cartridges: V102C (color) and V101B (black)**

---

## Notes

