

PF-Pro Print Factory Installation Quick Reference Guide

for Windows 7, Vista, and XP



For a more in-depth look at the installation process, please refer to the Installation section of the User's Manual.

Be sure your computer meets the Minimum System Requirements as stated in the User's Manual and that you have read these instructions and the Manual prior to contacting Microboards Technical Support with installation or configuration questions!

Do NOT connect your PF-Pro Print Factory to your computer until the Installer prompts you to do so!!

PF-Pro Print Factory Installation:

You should not attempt to install the PF-Pro Print Factory unless you are logged on to your PC with administrative rights.

The hardware and much of the software installation will occur without intervention.

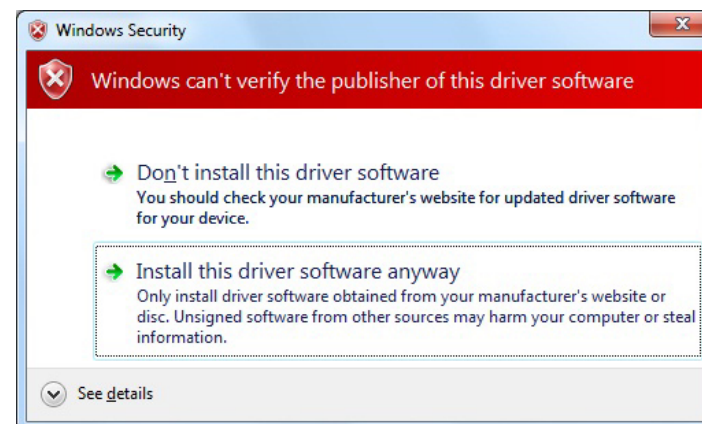
1. Unpack the PF-Pro Print Factory and place it in the selected workspace. This space should have enough vertical space to allow for easy loading of media into the input hopper and have enough room to the back of the PF-Pro Print Factory to allow the unloading of rejected discs.
2. Insert the PF-Pro Print Factory Installation disk into the CD/DVD ROM drive on your computer. The installer should open automatically.

Select **Microboards PF-Pro Print Factory** from the list, then click the **Install Microboards PF-Pro Print Factory** button that appears.



- A. If the installer does not automatically open, click the **Start** button and select Run from the Start menu. Click the **Browse** button and go to the CD/DVD drive, highlight **MBInstall.exe**, click the **Open** button, then click **OK**.
 - B. Prerequisite Windows components may need to be installed before the Auto Printer can be installed. If any prerequisites are not present, they will be installed at this point. You will not be able to install your PF-Pro Print Factory without installing the prerequisite components. You may need to reboot the PC after any prerequisites are installed. The PF-Pro Print Factory installer will launch automatically after rebooting.
3. You will first be guided through the hardware setup. **Please follow all directions on each window before clicking the Next button.**

During the Installation process, you may see windows appear that refer to the drivers not being verified by the operating system. Should any of these windows appear, click the option to install the driver software.

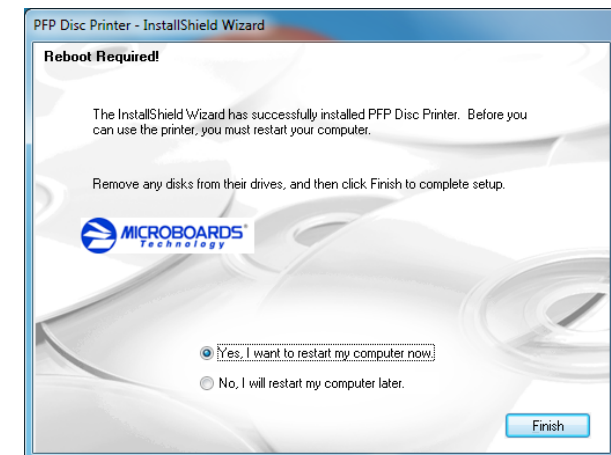


If you do not install the driver software, your hardware will not run successfully!

4. After the physical hardware setup is complete, you will be instructed to connect the PF-Pro Print Factory to the computer. Once this occurs, Windows will find your new hardware and run through the driver installation process.

You may see an indication that a hardware device was not completely installed. This is not unusual; the hardware installation will complete after the PC is rebooted. Continue through the Installer to the last window.

5. **Rebooting your PC is required before attempting to run your PF-Pro Print Factory!** Click the **Finish** button to do so.



The Microboards Printer Toolbox Installation

The Microboards Toolbox is installed silently during the PF-Pro installation. This application is used for general maintenance functions.

After the installation completes, the Toolbox will start up. You will see an icon appear in the tool tray in the lower right corner of your Windows desktop. To access the Toolbox, double-click the icon circled below.

The Toolbox will also automatically start up after rebooting the PC.



For more information on configuration options, please see the PF-Pro Print Factory Configuration Quick Reference Guide on the other side of this page, or refer to the appropriate sections of the User's Manual.

Installation Troubleshooting Guide:

Hardware not installing on PC	<ol style="list-style-type: none"> 1. Turn on power to PF-Pro Print Factory (back panel) 2. Reseat USB connection 3. Installation CD in drive?
Printer not responding	<ol style="list-style-type: none"> 1. Ink cartridge installed correctly? 2. Turn on power to Printer (front panel).

In order to guarantee quality results from the PF-Pro Print Factory,

ONLY MICROBOARDS PFP MODEL INK CARTRIDGES CAN BE USED!

As is true with all printers, the quality of ink cartridge and the quality of the ink within the cartridge will affect your output. To ensure quality results, the PF-Pro Print Factory will not operate with any other ink cartridges in place.

The use of refilled ink cartridges will void your warranty!

PF-Pro Print Factory Configuration Quick Reference Guide

for Windows 7, Vista, and XP

Print Image Alignment

Your PF-Pro Print Factory has been factory aligned to .1mm precision. Fine tuning may be required for different brands or printable surface types of media to provide full surface coverage.

1. Access the Printing Preferences for the Microboards PF Pro. How this is done will depend on the Operating System and the currently selected Start Menu layout.

Windows 7: Select **Devices and Printers** from the **Start** button.

Windows Vista: Select the **Control Panel** from the **Start** button. Once the Control Panel opens, select **Printer** from the **Hardware and Sound** section.

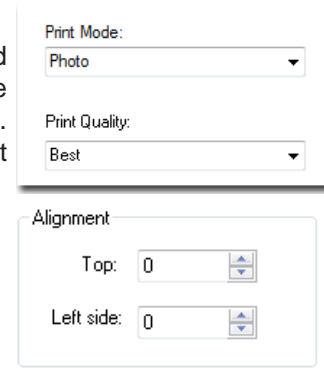
Windows XP, Classic Start Menu layout: You will need to go to the **Settings** selection, then to the **Printers and Faxes** from the **Start** button.

Windows XP, Start Menu layout: Select **Printers and Faxes** from the **Windows Start** button.

NOTE: THE ALIGNMENT VALUES MUST BE ENTERED FROM THE START BUTTON FOR THE SETTINGS TO BE SET AS THE DEFAULT SETTINGS, NOT FROM WITHIN ANY APPLICATION!!!

2. Right click on the icon for the **Microboards Print Factory Series** and select **Printing Preferences...**
3. On the **Print Quality** tab, select **Photo** for the **Paper Type** and **Best** or **Max DPI** for the **Print Quality**.

Photo Best or **Max DPI** should *always* be selected when aligning the printer, in order to insure the greatest accuracy during the alignment process. Other settings may not result in the best alignment.



4. Select the **Alignment** tab. The **.1mm Resolution** setting must be selected before setting alignment values (see below). Set the **Top** and **Left Side** alignment values to those required for image alignment.

These settings will change the size of the top and left margins, respectively. Decreasing the values will move the image up or to the left, increasing will adjust down or to the right.

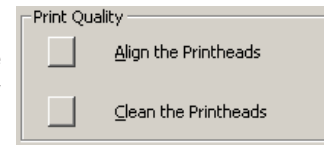
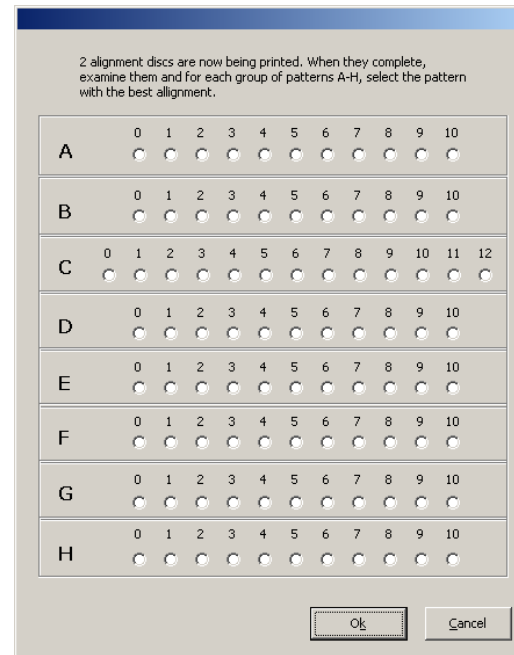
5. Click the **Apply** button to save the changes, found on the bottom of the Printing Preferences window.

For further details on the alignment process, please refer to the section on Alignment in the PF-Pro Print Factory User's Manual.

Printhead Alignment

The Printhead Alignment should always be run when printheads are installed or replaced. Misaligned printheads can show as overlapping areas of color or regularly-spaced gaps in the printed output; if this occurs at any time, run the Alignment.

1. Double-click the **Toolbox icon** in the tool tray in the lower right corner of your Windows desktop.
2. On the **Services** tab of the Toolbox, click the **Align the Printheads** button in the Print Quality section.
3. Load 4 unprinted discs into the input hopper and click the **Align** button on the next screen. 2 discs will each be printed with 4 alignment pattern sets labelled with a letter, each with a set of numeric values.
4. Select the setting for each alignment pattern set that shows the best alignment in the next screen.
5. Click the **OK** button when all 8 alignment set values have been selected.
6. 2 more discs will be printed with the printhead alignment pattern. If this best alignments of each set have moved closer to the center of the pattern sets, click **Cancel**. If the best aligned patterns have moved further away from the center of the sets than on the original discs, you will need to run the printhead alignment again. Click **OK** to repeat steps 4 through 6, using 2 more unprinted discs.

Cleaning the Printheads

The printheads may occasionally need to be cleaned for best results. If the printed output is showing horizontal streaks, the printheads should be cleaned.

1. Double-click the **Toolbox icon** in the tool tray in the lower right corner of your Windows desktop.
2. On the **Services** tab of the Toolbox, click the **Clean the Printheads** button in the Print Quality section.
3. Load an unprinted disc into the input hopper and click the **Clean** button on the next screen.
4. The printer will go through a process that cleans the printheads, after which the disc will be printed. Verify that the horizontal streaks have been eliminated; if not, repeat steps 3 and 4.

Be sure your computer meets the Minimum System Requirements as stated in the User's Manual and that you have read these instructions and the Manual prior to contacting Microboards Technical Support with installation or configuration questions!

In order to guarantee quality results from the PF-Pro Print Factory,

**ONLY MICROBOARDS PFP Model
INK CARTRIDGES CAN BE USED!**

As is true with all printers, the quality of ink cartridge and the quality of the ink within the cartridge will affect your output. To ensure quality results, the PF-Pro Print Factory will not operate with any other ink cartridges in place.

The use of refilled ink cartridges will void your warranty!