

CX-1 Disc Publisher Installation Quick Reference Guide

for Windows 7, Vista, and XP



For a more in-depth look at the installation process, please refer to the Installation Section of the User's Manual.

Be sure your computer meets the Minimum System Requirements as stated in the User's Manual and that you have read these instructions and the Manual prior to contacting Microboards Technical Support with installation or configuration questions!

Do NOT connect your CX-1 Disc Publisher to your computer until you are prompted to do so by the CX-1 Disc Publisher Installer

CX-1 Disc Publisher Installation:

You should not attempt to install the CX-1 Disc Publisher unless you are logged on to your PC with administrative rights.

The hardware and much of the software installation will occur without intervention.

1. Unpack the CX-1 Disc Publisher and place it in the selected workspace. This space should have enough vertical space to allow for easy loading of media into the input hopper and have enough room behind the CX-1 Disc Publisher to allow the unloading of rejected discs.
2. Insert the CX-1 Disc Publisher Installation disk into the CD/DVD ROM drive on your computer. The installer should open automatically.

If the installer does not automatically open, click the **Start** button and select Run from the Start menu. Click the **Browse** button and go to the CD/DVD drive, highlight **MBInstall.exe**, click the **Open** button, then click **OK**.

Prerequisite Windows components may need to be installed before the Disc Publisher can be installed. If any prerequisites are not present, they will be installed at this point. You will not be able to install your Disc Publisher without installing the prerequisite components. You will need to reboot the PC after the prerequisites are installed. The Disc Publisher installer will launch automatically after rebooting.



Select **Microboards CX-1 Disc Publisher** from the list, then click the **Install Microboards CX-1 Disc Publisher** button that appears.

3. You will first be guided through the hardware setup. **Please follow all directions on each window before clicking the Next button.**
4. After the physical hardware setup is complete, you will be instructed to connect the CX-1 Disc Publisher to the computer. Once this occurs, Windows will find your new hardware and run through the driver installation process.
5. Once all of the drivers have been installed, click the **Next** button and you will be prompted to install the ink cartridges. Click the Next button when complete.
6. Click the **Finish** button when complete. If the hardware is still being installed at this point, you will be asked to wait until that process is complete.
7. **Disc Publishing Software Installation**
 - A. Click the **Finish** button to begin the PrintWrite Disc Publishing software installation process. PrintWrite is not supported on Windows 2000.
8. **Rebooting your PC is required before attempting to run your CX-1 Disc Publisher!** Click the **Finish** button to do so.

The Microboards Printer Toolbox Installation

The Microboards Toolbox is installed silently during the CX-1 installation. This application is used for general maintenance functions.

After the installation completes, the Toolbox will start up. You will see an icon appear in the tool tray in the lower right corner of your Windows desktop. To access the Toolbox, double-click the icon circled to the right.



The Toolbox will also automatically start up after rebooting the PC. Please see the other side of this Guide or the User's Manual for more information on the Toolbox.

For more information on configuration options, please see the CX-1 Disc Publisher Configuration Quick Reference Guide on the other side of this page, or refer to the appropriate sections of the User's Manual.

Windows Configurations for Non-Administrative Users

To allow users who are logged on to your PC without administrative privileges to use PrintWrite, a few final steps must be taken. You will need to be logged in as an administrator to perform these steps.

If you only have users with administrative rights on your PC, or do not intend to allow non-administrative users to run PrintWrite, you will not need to perform the following steps.

Sharing the PrintWrite Working Directories

If PrintWrite is to be run by users logged in as Standard or other Non-Administrative user types, the main PrintWrite application directory will need to be shared to allow those users access to the necessary files and directories. The main application directory will be the same as the directory specified during the PrintWrite installation. The default installation directory is **C:\Program Files\Microboards\PrintWrite**; if you changed the location, you must share the directory you selected.

You will need to specify that you are allowing users to modify the contents of the PrintWrite directory.

You will also need to share the **C:\MBSDK Data** directory in the same way. The location of this directory cannot be changed during the installation. This directory will not appear until the first time PrintWrite is launched.

Windows Firewall

You may need to add two applications, PrintWrite.exe and ServerManager.exe to the Windows Firewall Exceptions list, depending on your PC's Windows Firewall settings. If Windows Firewall is on and you do not add them to the exceptions list, non-administrative users will be blocked from running PrintWrite.

Installation Troubleshooting Guide:

Hardware not installing on PC	<ol style="list-style-type: none"> 1. You do not have Administrator privileges on your PC. Log in as an administrator before installing. 2. Turn on power to CX-1 Disc Publisher (back panel) 3. Reseat USB connection 4. Installation CD in drive?
Printer not responding	<ol style="list-style-type: none"> 1. Ink cartridge installed correctly? 2. Turn on power to Printer (front and rear panels).

In order to guarantee quality results from the CX-1 Disc Publisher,

**ONLY V102C and V101B
INK CARTRIDGES CAN BE USED!**

As is true with all printers, the quality of ink cartridge and the quality of the ink within the cartridge will affect your output. To ensure quality results, the CX-1 Disc Publisher will not operate with any other ink cartridges in place.

The use of refilled ink cartridges will void your warranty!

CX-1 Disc Publisher Configuration Quick Reference Guide

for Windows 7, Vista, and XP

Print Image Diameter Settings

The Microboards CX-1 Disc Publisher includes the ability to mask the print image diameters to ensure that your media is not being printed outside of the printable surface. While SureThing Disc Labeling software creates circular templates 120mm in diameter, other applications may not limit the design to the correct size.

The default Inner Diameter setting is 360 (36mm). If you are using a print template with an inner hub of less than 36mm, you must change the Inner Diameter setting to match that of the template for the image to print correctly.

To change the Diameter settings, please follow these steps:

1. Access the Printing Preferences for the Microboards PF3. How this is done will depend on the Operating System and the currently selected Start Menu layout.

Windows 7: Select **Devices and Printers** from the **Start** button.

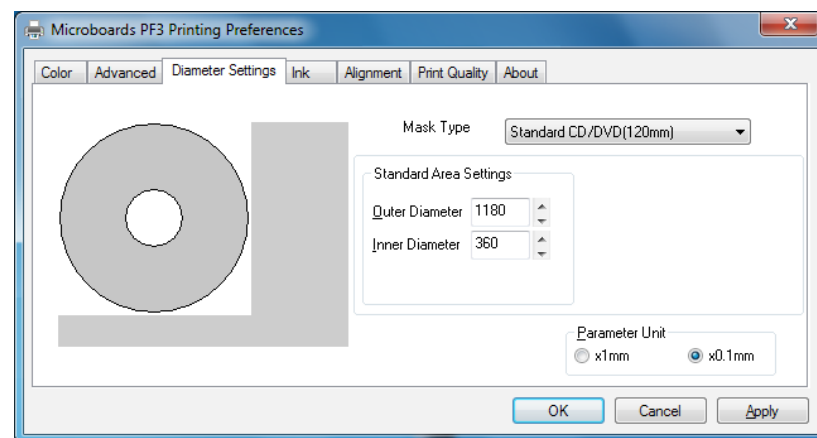
Windows Vista: Select the **Control Panel** from the **Start** button. Once the Control Panel opens, select **Printer** from the **Hardware and Sound** section.

Windows XP, Start Menu layout: Select **Printers and Faxes** from the **Windows Start** button.

Windows XP, Classic Start Menu layout: You will need to go to the **Settings** selection, then to the **Printers and Faxes** from the **Start** button.

2. Click the **Diameter Settings** tab.
3. The **Outer Diameter** setting will define where the masking clips the outer edge of the print image. In the example shown below, the image will print to the default diameter of 118mm (the Parameter Unit is set to 0.1mm).

The **Inner Diameter** setting will define how far towards the center of the disc the image will print. This setting will need to be changed when printing to hub-printable media. The default of 36mm diameter of unprinted area is shown.



4. Click the **Apply** button to save the changes.

Print Image Alignment

Your CX-1 Disc Publisher has been factory aligned to .1mm precision. Fine tuning may be required depending on the media brand and printable surface type you are using to provide full surface coverage.

1. Access the Printing Preferences for the Microboards PF3. How this is done will depend on the Operating System and the currently selected Start Menu layout.

Windows 7: Select **Devices and Printers** from the **Start** button.

Windows Vista: Select the **Control Panel** from the **Start** button. Once the Control Panel opens, select **Printer** from the **Hardware and Sound** section.

Windows XP, Start Menu layout: Select **Printers and Faxes** from the **Windows Start** button.

Windows XP, Classic Start Menu layout: You will need to go to the **Settings** selection, then to the **Printers and Faxes** from the **Start** button.

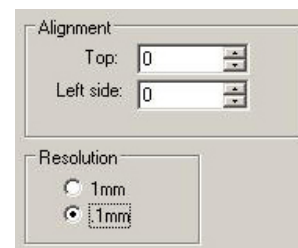
NOTE: THE ALIGNMENT VALUES MUST BE ENTERED THROUGH THE PRINTERS AND FAXES WINDOW FOR THE SETTINGS TO BE USED IN PRINTWRITE, NOT FROM WITHIN THE APPLICATION!!!

2. Right click on the icon for the **Microboards PF3** and select **Printing Preferences...**
3. On the **Print Quality** tab, select **Photo** for the **Print Mode** and **Best** or **Max DPI** for the **Print Quality**.

Photo Best or **Max DPI** should *always* be selected when aligning the printer, in order to insure the greatest accuracy during the alignment process. Other settings may not result in the best alignment.

4. Select the **Alignment** tab. The **.1mm Resolution** setting must be selected before setting alignment values (see below). Set the **Top** and **Left Side** alignment values to those required for image alignment.

These settings will change the size of the top and left margins, respectively. Decreasing the values will move the image up or to the left, increasing will adjust down or to the right.



5. Click the **Apply** button to save the changes, found on the bottom of the Printing Preferences window.
6. Verify the alignment by printing a full disc image on the media. Repeat these steps if further alignment adjustments are required.

For further details on the alignment process, please refer to the section on Alignment in the CX-1 Disc Publisher User's Manual.

Printer Toolbox

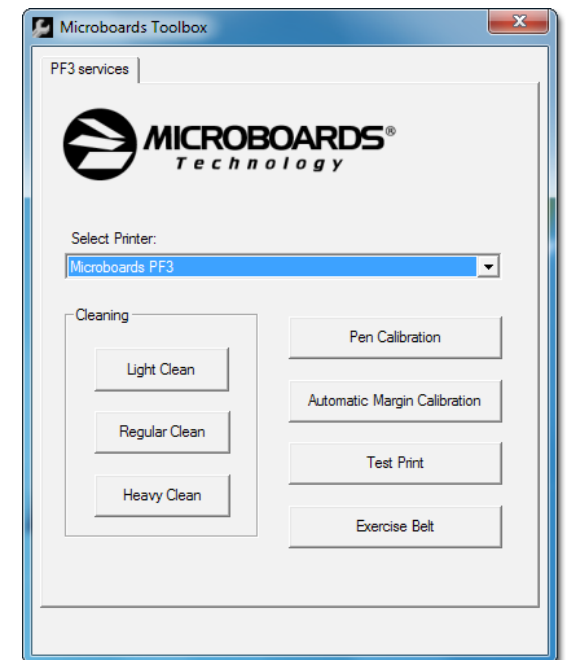
The **Printer Toolbox** contains several utility functions for the CX-1 Disc Publisher. The toolbox will open automatically after installation of the CX-1, and each time the PC boots up. It can also be run by double-clicking the **PF3 Toolbox** icon in the tool tray.



The functions of the Toolbox include:

- Printhead Cleaning Utilities
- Pen Calibration
- Automatic Margin Calibration
- Test Print
- Belt Exerciser
- Low Ink warnings

For more information on the Toolbox, please refer to the User's Manual.



Be sure your computer meets the Minimum System Requirements as stated in the User's Manual and that you have read these instructions and the Manual prior to contacting Microboards Technical Support with installation or configuration questions!

In order to guarantee quality results from the CX-1 Disc Publisher,

**ONLY V102C and V101B
INK CARTRIDGES CAN BE USED!**

As is true with all printers, the quality of ink cartridge and the quality of the ink within the cartridge will affect your output. To ensure quality results, the CX-1 Disc Publisher will not operate with any other ink cartridges in place.

The use of refilled ink cartridges will void your warranty!