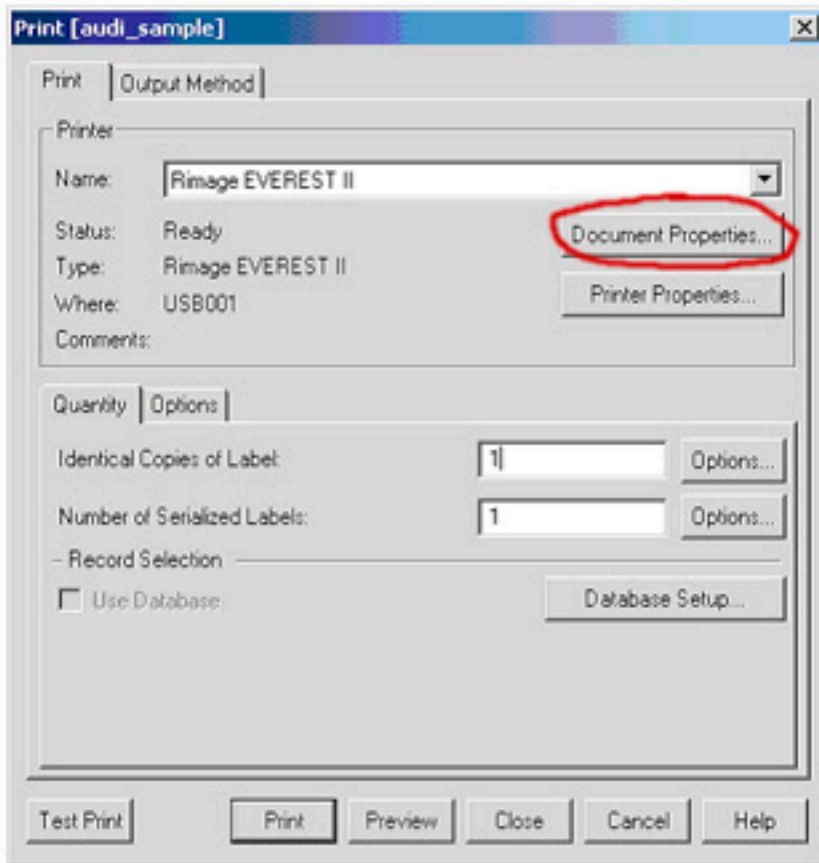
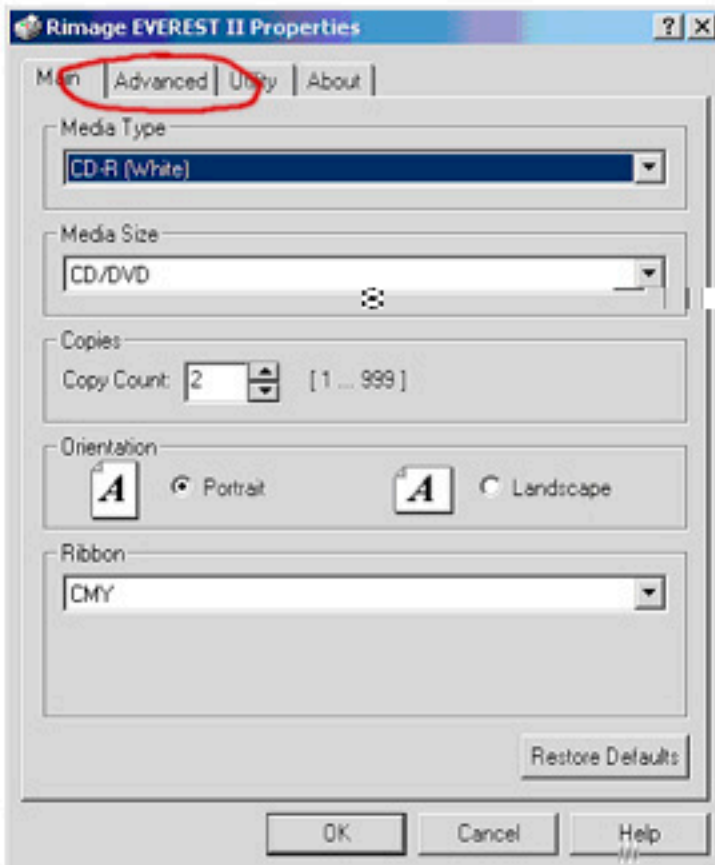


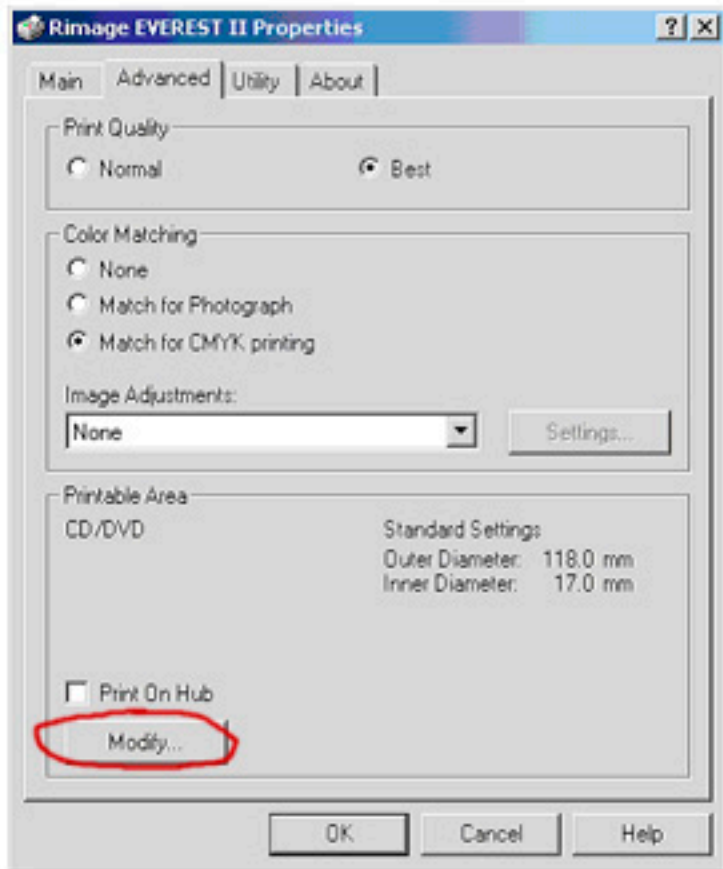
Settings for PRODISC CD-Rs off the Rimage II Thermal Printer



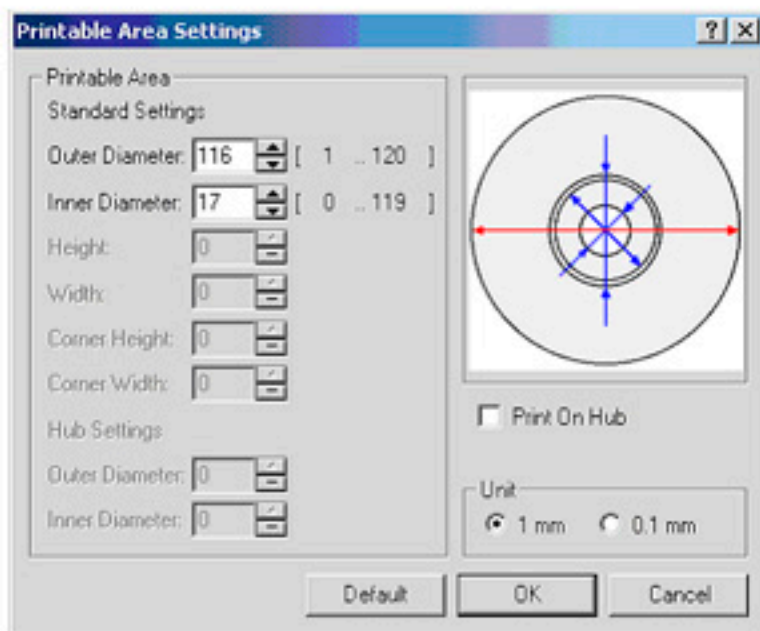
This is the first dialog Box after selecting "Print". Click on the "Document Properties" button.



This is the second dialog box. Click on the "Advanced" tab.



This is the third dialog box.
Click on the "Modify" button.



This is the forth dialog box.
For the best results:
Set the "Outer Diameter" to 116.
Set the "Inner Diameter" to 17.