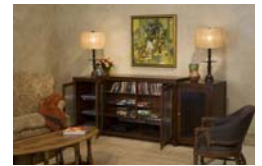


BRYANT TV LIFT WITH SIDE CABINETS (10025, 10125/10225)

The Bryant TV lift cabinet with matching side cabinets have a clean contemporary design. The mocha finish, brushed nickel hardware and textured "wavy" glass provide a translucent modern enduring style. Internal puck lighting provides a warm accent. The Bryant is a full size cabinet.



Beautiful Construction

- Solid poplar and birch/cherry veneers with **mocha** stain and 7-step finishing process
- English dovetail joints and brushed nickel hardware
- Integrated component storage with 6 media storage shelves

Unique Features

- Patent-pending lift and mounting mechanism with proprietary anti-collision safety technology
- Accommodates televisions between 37" and 50" (and some 52")
- Built-in RS232 port compatible with home automation systems
- Lift controlled by wired handset or IR remote control
- Modular plug-and-play system allows for easy replacement of all lift components and electronics
- Easy 10 minute installation!
- Removable rear doors provide easy access for component set up

Product Specs	Bryant TV Lift Cabinet	Bryant Side Cabinets (each)
Net Weight	318	84
Gross Weight	373	101
Product Dimensions	(H) 41" x (W) 57 7/8" x (D) 22 1/2"	(H) 39" x (W) 23 1/4" x (D) 21"
TV Cavity	(H) 36" x (W) 56" x (D) 13"	