

Aleratec DVD/CD RoboRacer SA™

Part No. 280112

The DVD/CD RoboRacer SA is the 3rd generation of the highly successful RoboRacer series and is a fully automatic, stand alone DVD/CD duplicator with a 100 disc capacity. Stand alone means no computer is required and you can load it with a source disc and up to 100 blank DVDs or CDs and it will produce 100 DVD or CD copies completely unattended. It will also operate in a batch mode by loading a source disc and the desired number of blank discs for copies, then load another source disc and blank discs for copies of the second source and so on. Just press ENTER and the machine will produce the desired number of copies of each source disc automatically. This powerhouse is equipped with a USB connection to a built in hard disk drive that can conveniently store multiple source disc images that can be quickly duplicated at any time. These unique features and its compact desktop size make DVD/CD RoboRacer SA a necessary tool for anyone needing to make fast efficient copies of DVDs or CDs.

Features

- Stand Alone, 100 Disc Capacity
- Fully Automatic Disc Handling
- Unattended Operation
- Batch Mode Processing Copies Multiple Source Discs

UPC Code: 808068-00433-2
Country of Origin: Proudly assembled in the USA from components sourced globally



Preliminary

Aleratec, Inc.
www.aleratec.com

9851 Owensmouth Ave., Chatsworth, CA 91311

Toll Free: (866) 88-ALERATEC (866.882.5372) • Phone: (818) 678-6900 • Fax: (818) 678-0486

Aleratec and DVD/CD RoboRacer SA are trademarks of Aleratec, Inc. All other product names are trademarks or registered trademarks of their respective companies. Specifications subject to change without notice.

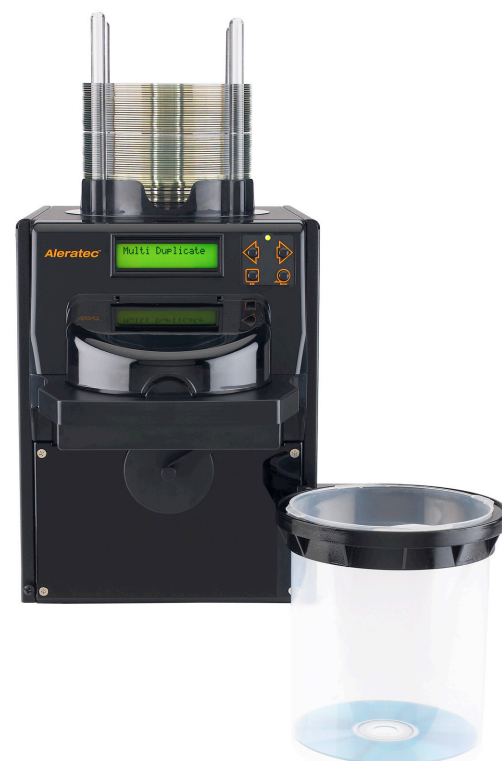
May 2009 Rev A

Aleratec DVD/CD RoboRacer SA™

Part No. 280112

Technical Specifications

Disc Capacity	100 Discs
Recorder	Aleratec designed DVDRW
Write Speed	DVD: 20x CD: 48x
Media Type	12cm - DVD-R / DVD-R DL / DVD-RW / DVD+R / DVD+R DL / DVD+RW / DVD-RAM / DVD-ROM / CD-R / CD-RW / CD-ROM
Connection Interface	USB 2.0 to built in hard disk drive
Built-in Hard Disk Drive	320GB
Operation Environment	Operating Temperature: 50 °F to 90 °F (10 °C to 32 °C) Humidity: 15% to 80%
Dimensions (L x W x H)	355 x 250 x 560 mm (Size Includes Disc Collection Bin)
Weight	8.8 lb / 4 kg
Power	100V-240V AC, 50/60Hz



see other side →

Aleratec, Inc.

www.aleratec.com

9851 Owensmouth Ave., Chatsworth, CA 91311

Toll Free: (866) 88-ALERATEC (866.882.5372) • Phone: (818) 678-6900 • Fax: (818) 678-0486